

Analysis of PET Sample from: Asia Pacific Industry Group Co., Limited

Asia Pacific Industry Group Co., Limited
<http://www.boppfilmsale.com>
<http://www.apigcl.com>
Skype: asiapacificsale
Wechat/whatsapp/mobile:86-18919654871
Shui Eastern Communication
<http://www.boppfilmsale.com>

Motivation

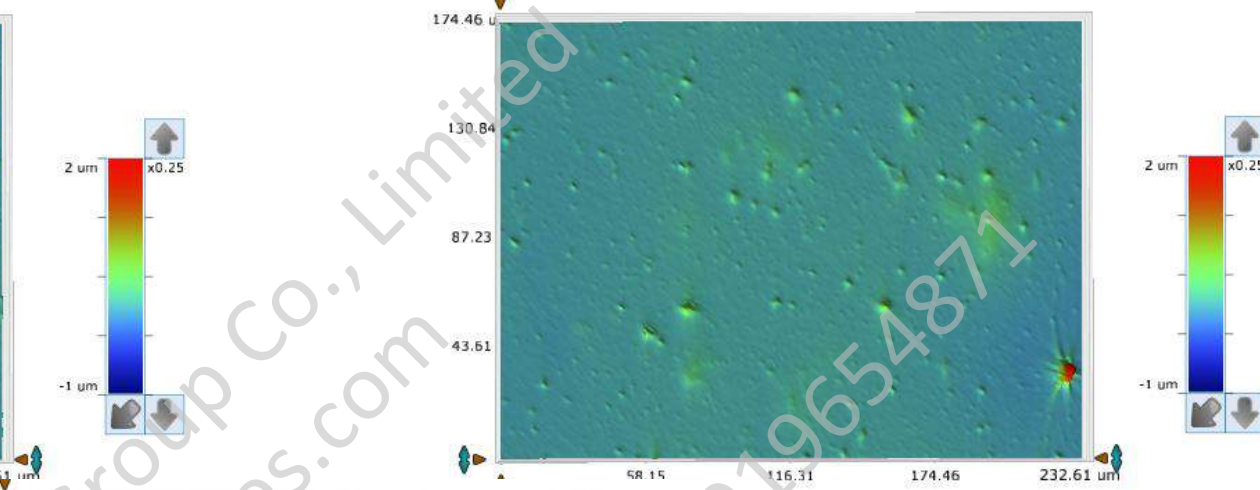
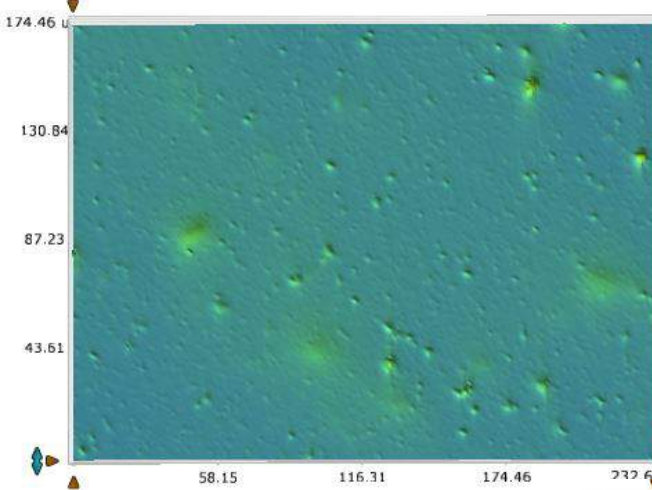
- Initial PET Analysis involves understanding the surface roughness of the raw PET material.
- This is done to ensure compatibility with our system from product and process perspectives.
- The data that follows suggests that this material will

The samples were run at the 27.2x magnification (50x objective at 0.55 fov), in the VSI mode. Five fields of each sample were examined and the statistics of the five fields are included along with the Contour 3D plots of the fields.

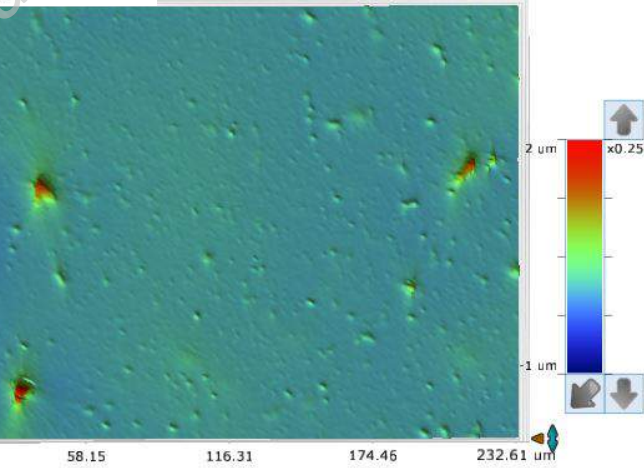
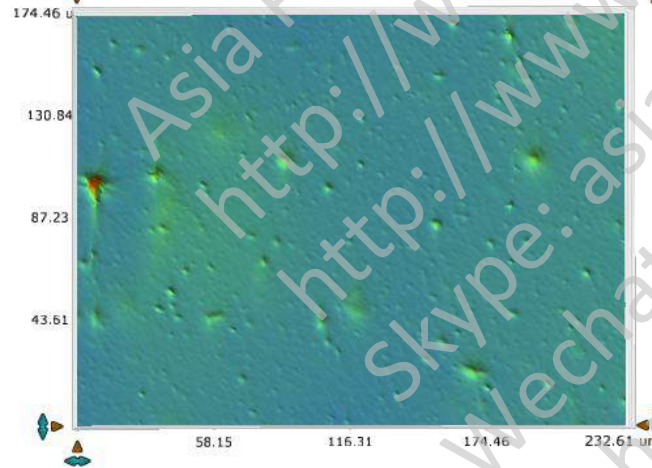
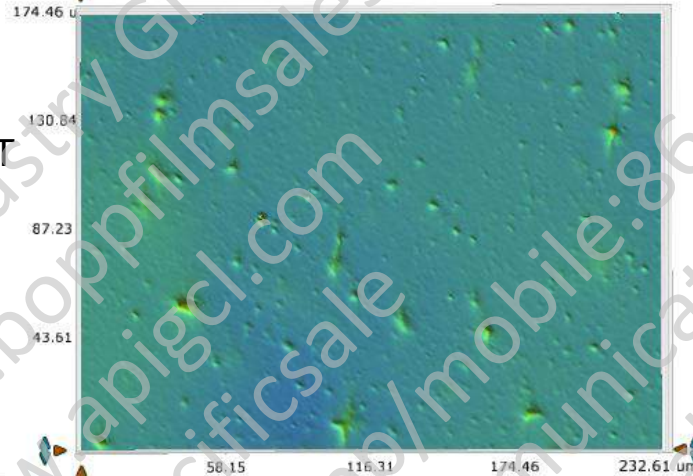
Title	Ra(nm)	Std.	Rq(nm)	Std.	Rt(μm)	Std.	Rz(μm)	Std.	Rpm(μm)	Std.	Rvm(- μm)	Std.
Side 1	32.47	3.11	61.33	11.10	2.32	0.69	1.30	0.29	1.15	0.27	0.16	0.03
Side 2	32.24	5.57	64.43	19.21	2.03	0.86	1.26	0.43	1.13	0.43	0.14	0.03

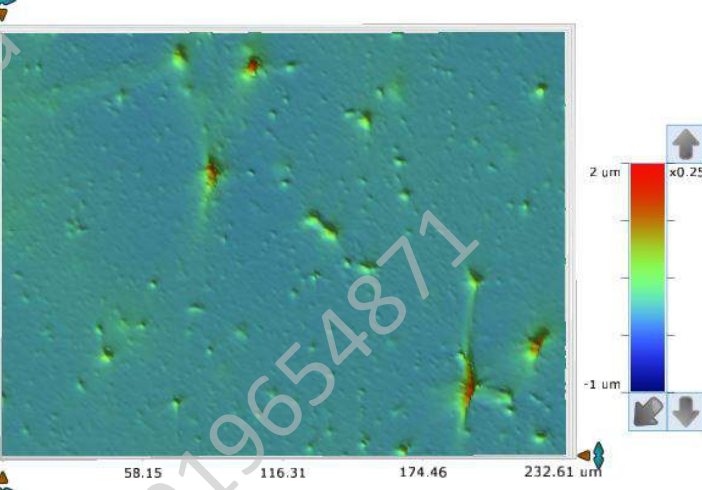
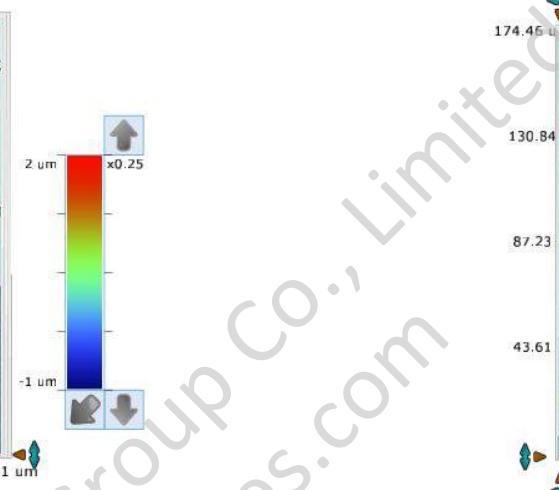
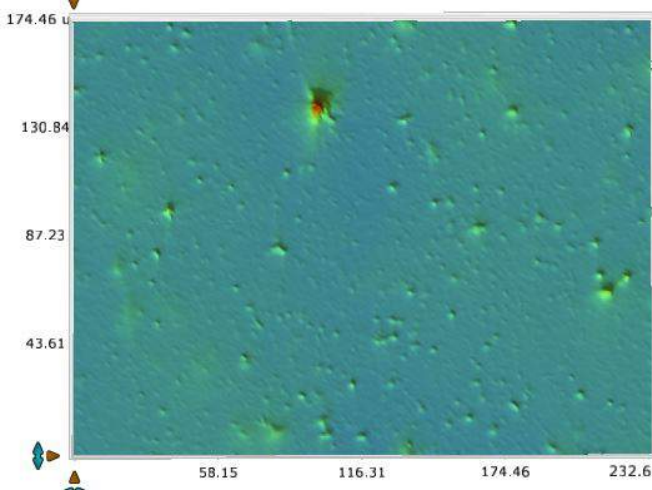
Both sides appear to be similar

Asia Pacific Industry Group Co., Limited
<http://www.boppfilmsale.com>
<http://www.apigcl.com>
 Skype: asiapacificsale
 Wechat/whatsapp/mobile: 86-18929654871
 Shui Eastern Communication
<http://www.boppfilmsale.com>



Asia Pacific International PET
Side 1





Asia Pacific Industry Group
PET Side 2

