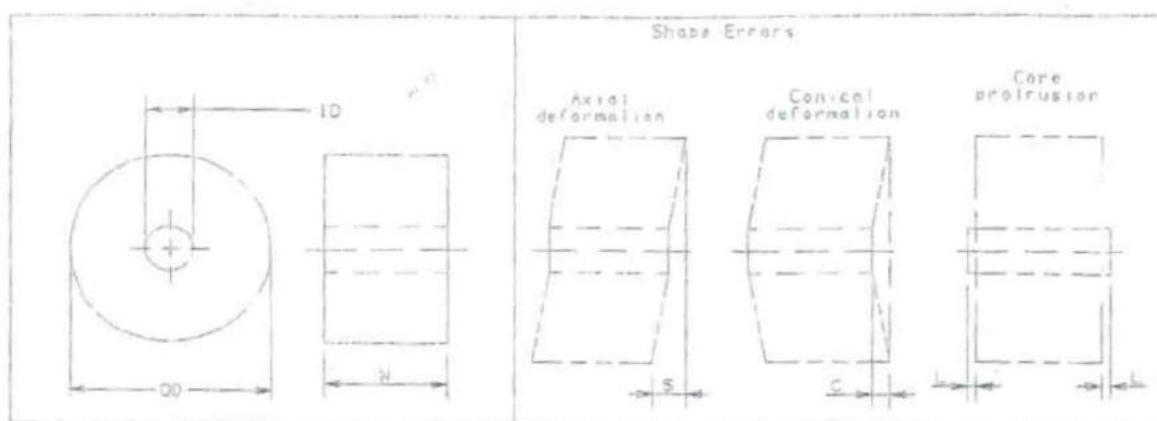
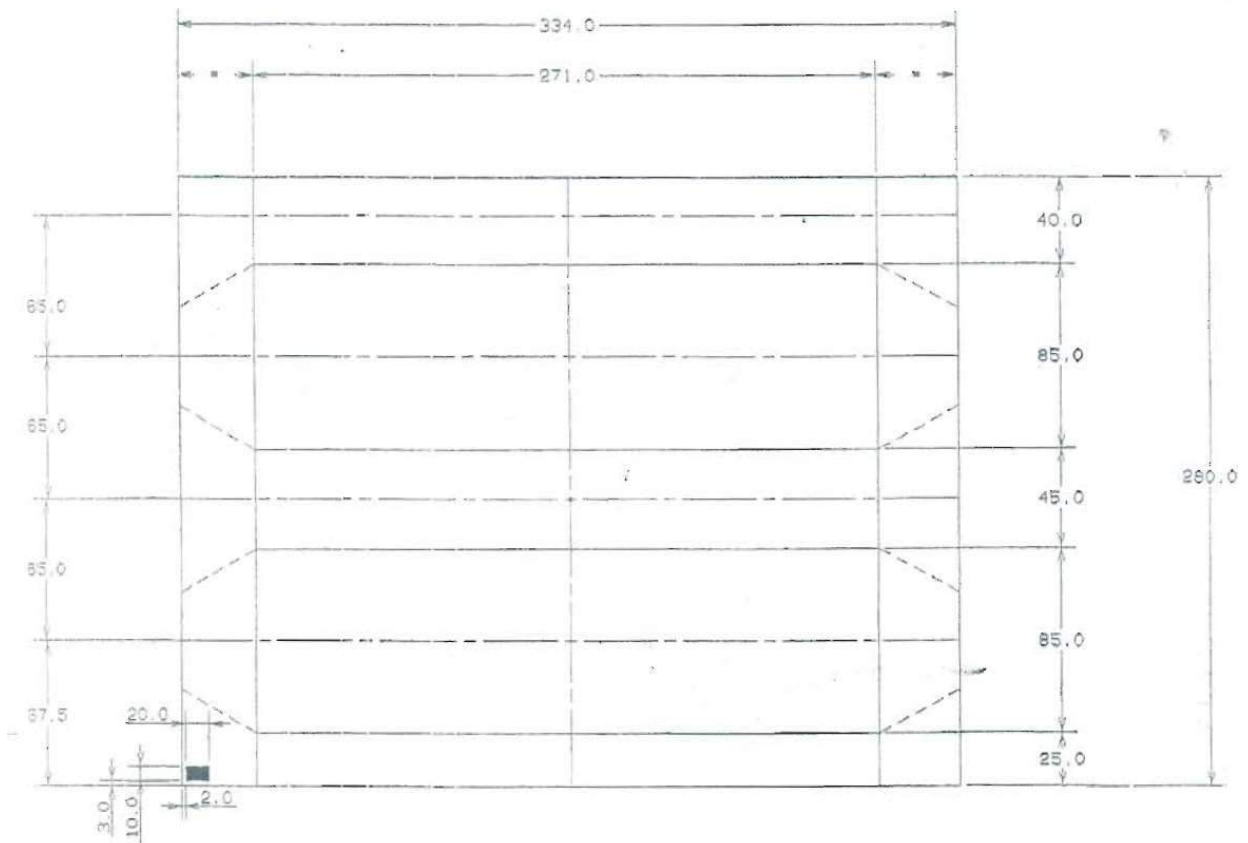


overwrapping cartridge Film

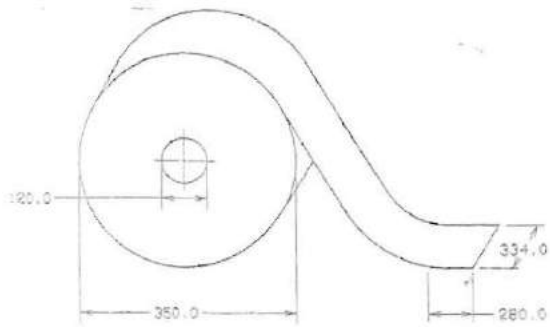
Parameter	Unit	Test Method	Value
Type of material			Polypropylene
Weight	g/m ²	ISO536	18.2 ÷ 22.8
Thickness	Um	ISO534	20 ÷ 25 (± 5%)
Coefficient of friction (Film / Film) - Kinetic			0.25 ÷ 0.30
<i>Dimensional stability</i>	%	2h-20°C- 85% UR	± 0.0
<i>Hot Welding Temperature</i>	°C		120 ÷ 140
Dimensions	mm		Comme défini sur le dessin d'enveloppement ± 1.0
-Tolerance on the width W	mm		± 1.0
- Outer Diamer max.	mm		600
- Internal diameter	mm		Comme défini sur le dessin d'enveloppement
- Tolerance on internal diameter	mm		± 0.5
Errors of form			
- Conical deformation	mm		3 mm max.
- Axial deformation	mm		3 mm max.
- Core protrusion	mm		1 mm max.
- Oval roll	mm		1% of outer diameter max
- Concentricity between Outer and internal diameter	mm		5 mm max.



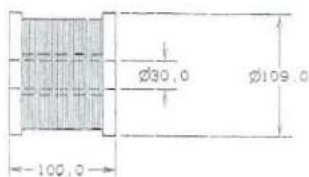
Parameter	Unit	Test Method	Value
Condition of use			
- Temperature	°C		20 ÷ 25
- Relative humidity	%		50 ÷ 65
- Treatment			Materials should be worn at the treatment site 48 hours before use
Storage			
- Temperature min / max	°C		5min – 30 max
- relative humidity	%		50 ÷ 65
- Storage time			It is recommended to use the materials in 3 months.
- Pallet and packaging			Must be completely protected the coils from damage and deformation.
- Warnings			Avoid arid and dry environments and exposure of materials to direct sunlight from gold or other atmospheric agents.
Material condition			
- band			Not damaged by cuts, tears, cracks or holes
- Adhesion of the coating			No removal of equipment during operation and use
- Coil junctions			1 max. For 20 reels
- Junction type			Superposition of the hot-welded strip
- Junction mark			Black band with the same width of the film
- Fixing to the core			By adhesive tape
- Coil wrap tension			The belt must be sufficiently taut to avoid axial displacements during transport and storage



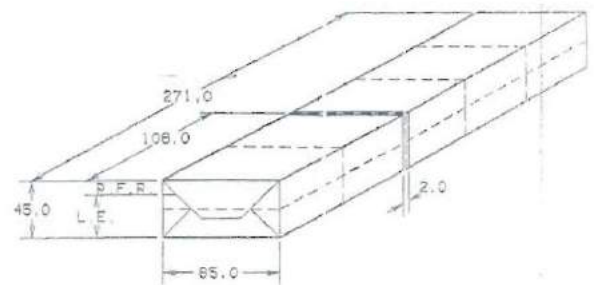
WRAPPING MATERIAL REEL
POLYPROPYLENE 23 G/M²



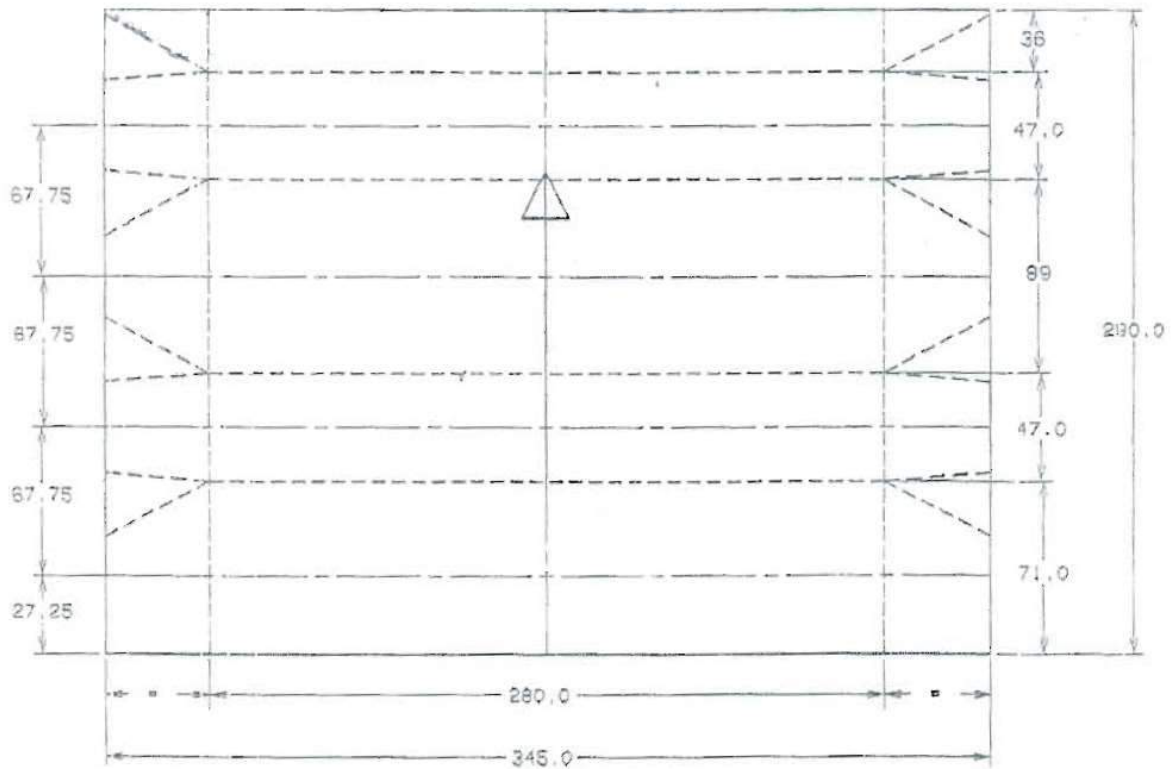
TEAR STRIP SPOOL (NORMAL)
POLYPROPYLENE 40-70 G/M²
(SELF-ADHESIVE)



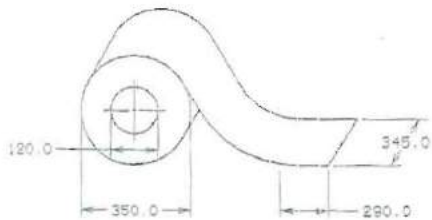
FERMETURE EXTREMITES FARDE: TYPE "SAVON"
DIMENSIONS FARDE 271,0X85,0X45,0



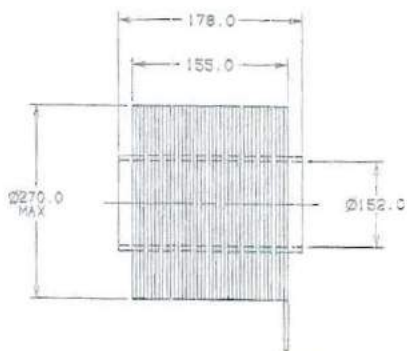
- APPROXIMATE DIMENSIONS
- NOT TO BE USED TO MANUFACTURE MATERIALS
- QUOTED DIMENSIONS ARE IN mm.



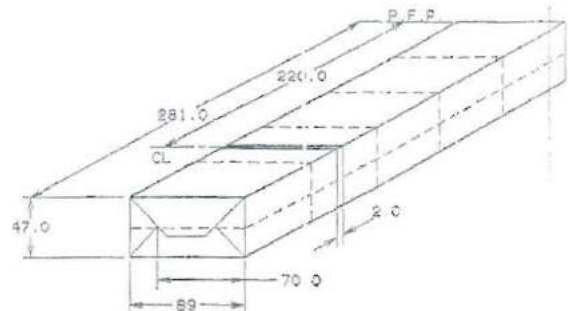
BOBINE MATERIAU ENVELOPPAGE
POLYPROPYLENE 18-23 G/M²



BOBINETTE BANDELETTE (MAXI-JUMBO)
AUTO-ADHESIF



FERMETURE EXTREMITES CARTOUCHE: TYPE "SAVON"
DIMENSIONS CARTOUCHE SANS CARTON



-DIMENSIONS UNIQUEMENT INDICATIVES
-TOUTES DIMENSIONS SONT EN MM
-NE PAS UTILISER POUR LA FABRICATION DE MATERIAUX